

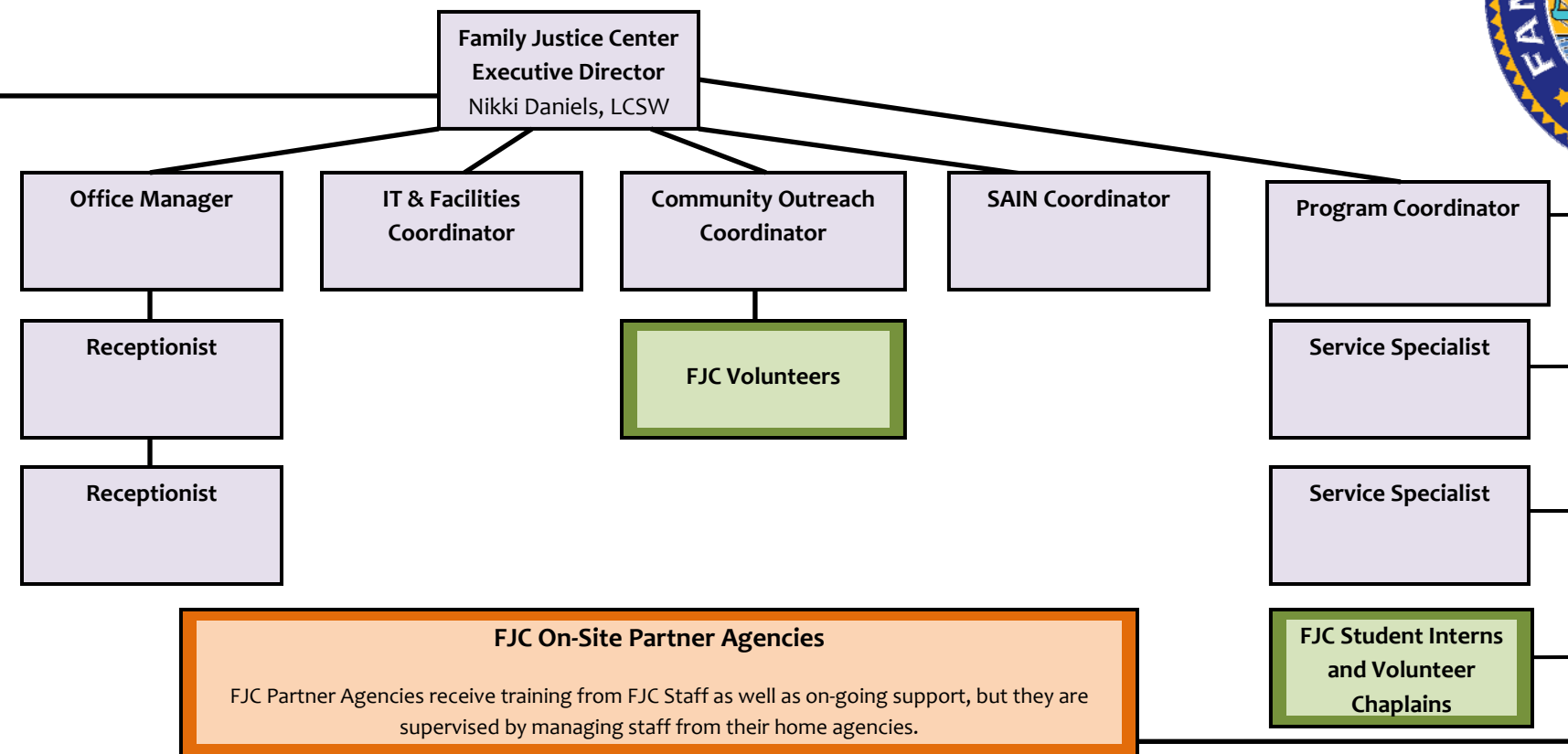


# Family Justice Center of Hillsborough County, Inc. Scope of Services Organizational Chart

**Legend:**  
■ FJC Volunteers  
■ FJC Staff  
■ Partner Agencies  
■ Partner Agencies Staff and Services

**Family Justice Center Board of Directors**

Mark Albrechta, Law Office of Mark J. Albrechta  
 Duane Bishoff, Hobson, Bishoff & Dowdy, PLLC  
 Jason Borreca, The Bank of Tampa  
 Jody Byler, Ryan Companis US, Inc.  
 Lori Ann DeLoreto, Bridges... The Journey  
 Henry Gill, Chubb Group of Insurance Companies  
 State Representative Rich Glorioso, District 62  
 Jim Hengelbrok, Bay Area Legal Services, Inc.  
 Charles A. Houchell, Houchell & Bohne, PLLC  
 Judy Karniewicz, The Karniewicz Law Group  
 Ken Lane, Lane, Witherspoon & Carswell Commercial Real Estate Advisors  
 Cynthia Lumpee, PAR INC.  
 Dana Macdonald  
 Thomas Menendez, The Bank of Tampa  
 Michael Neely, New Millennium Church  
 Rod Reder, National Institute of Crime Prevention  
 Linda Reynolds, Pinellas Federal Credit Union  
 Richard Rolfes, Rolfes Consulting  
 Tanya Wilkerson, Corinthian Colleges, Inc.  
 Linda Wizner, IBM



**FJC On-Site Partner Agencies**

FJC Partner Agencies receive training from FJC Staff as well as on-going support, but they are supervised by managing staff from their home agencies.

Updated 05/14/2010

<b>ACCESS FL</b>	<b>BB/BS</b>	<b>Clerk of Court</b>	<b>DACCO</b>	<b>FL Kid Care</b>	<b>HC Children Services</b>	<b>Hispanic Services</b>	<b>MacDill Family Advocacy</b>	<b>New Millennium Church</b>	<b>The Spring of Tampa Bay</b>
Medicaid, Food Stamps, TANE  Online Benefit Application & On-Site TA as needed	Big Brothers Big Sisters  Family Educational Groups	Injunctions For Protection  Trains and assists FJC staff in processing injunctions.	Substance Abuse Prevention  Prevention Specialist	Health Insurance for Children  Online access to benefit application and on-site TA	Counseling for Children  Counselors	Counseling, Interpretation & Translation for Hispanic Families  Case Manager	Victim Advocacy for Military Victims & Families  Victim Advocate	Spiritual Support & Volunteer Chaplain  Pastor	DV Education, Support, Advocacy, Groups, Safety Planning, Etc.  Case Mangers:
<b>Bay Area Legal</b>	<b>Centre for Women</b>	<b>Crisis Center</b>	<b>Deaf Services</b>	<b>Gulfcoast Legal</b>	<b>HC Health &amp; Social Services</b>	<b>Life Center</b>	<b>Metropolitan Ministries</b>	<b>Northside Mental Health</b>	<b>Wheels of Success</b>
Family Law & Injunction Services  Attorneys  And  Administrative Assistant Additional Rotating Staff	Employment Specialist	Trauma Treatment  Advocate	Counseling & Interpretation Services for Deaf and Hearing Impaired  On-site TA as needed	Immigration Legal Services  Attorneys  And  Paralegal	Emergency Financial Assistance & HC Health Care Access  Social Worker	Grief Counseling  Counselor    Counselor	Metropolitan Ministries Provides Food Boxes For Guests At FJC	Case Management  Case Managers	Car Repairs & Giveaways for Working Families  Executive Director Office Manager Support Staff